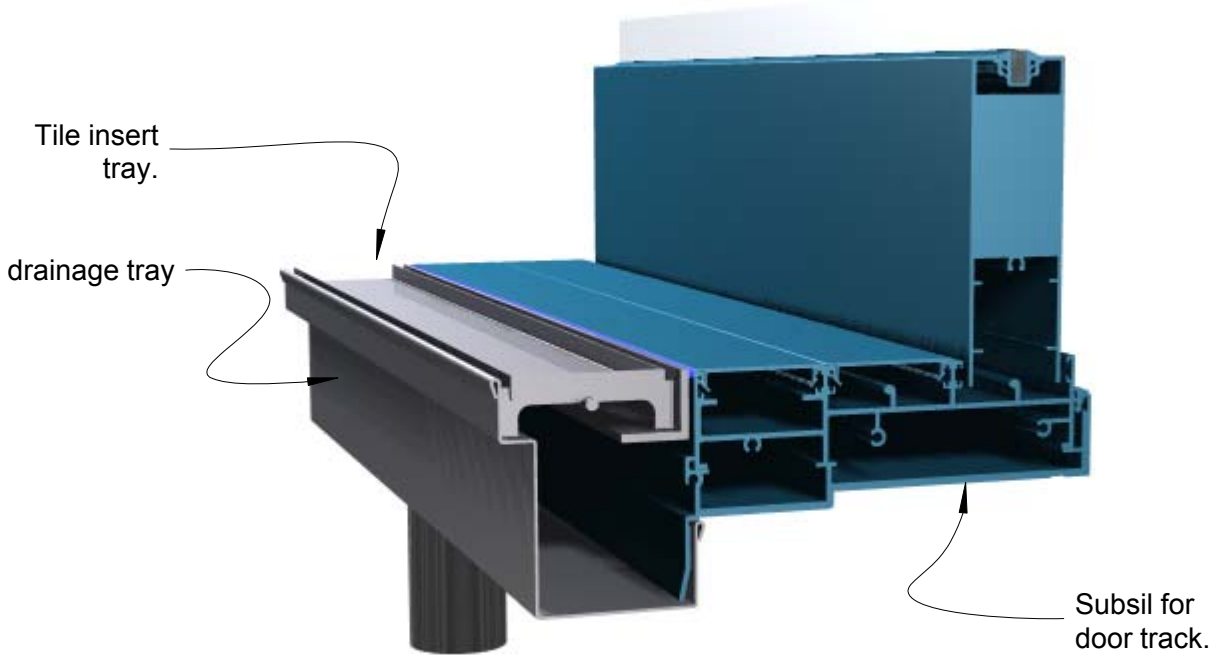


65TiTDi Linear threshold Drainage System



- * The entire door track and 65TiTDi are set in above and separate to waterproofing. Therefore waterproofing must be completed first.
- * Install the door track sub-sil.
- * When installing the 65TiTDi, the tray needs to be slightly deeper than the lowest part of the Sub-sil.
- * Standard installation squence generally has the door track sub-sil in place before the drain. Therefore the tray may need to be slightly deeper than lowest part of the sub-sil to allow the drain channel to slide underneath the sub-sil.
- * Refer to;
AS1428 Design for Access and Mobility
AS4654 for waterproofing

