

Modular Kits

Modular site finish system designed for flexibility + ease of installation.



- + Easy to install
- + Adaptable to fit specific needs
- + Available with all Stormtech Grate and Tile Insert Designs
- + Joiners and angle joiners available

For indefinite lengths and corner installations.



AR

AA

TR

Ti

MND

PS

PPS

PAS

Stormtech®



Choose your design + finish



STAINLESS STEEL KITS

316 grade Stainless steel channel and fittings with stainless steel or aluminium grate.

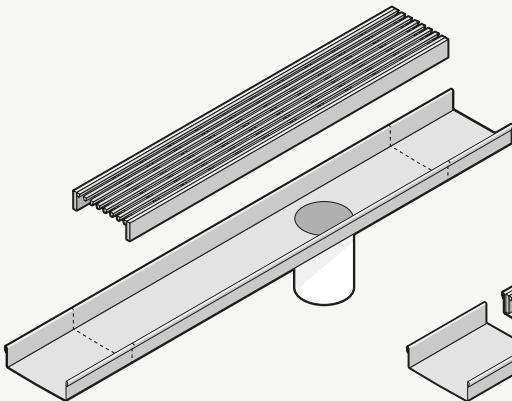
Available kit lengths (for installations up to):

900mm	1500mm	1900mm
1000mm	1800mm	2000mm
1200mm		

SMART INSTALLATION + TRIM AND INSTALL + NO HOLE DRILLING REQUIRED

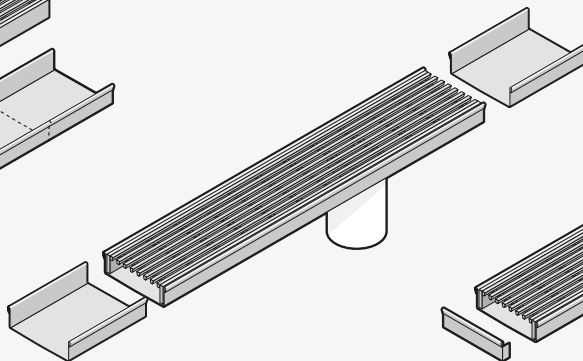
STEP 1

Mark length with outlet positioned where required.



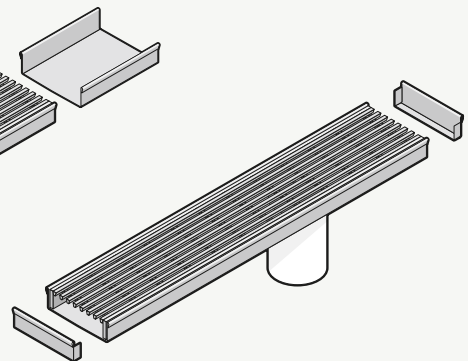
STEP 2

Trim Channel to required size.



STEP 3

Seal Channel with included End Caps.



COMPOSITE KITS

uPVC Channel and fittings with stainless steel or aluminium grate.

Channel and fittings in grey or black.

Available kit lengths (for installations up to):

900mm	1800mm	2400mm
1000mm	1900mm	2700mm
1200mm	2000mm	3000mm
1500mm	2200mm	



STAINLESS STEEL KITS

FINISHES +
COLOURS



STAINLESS STEEL
| ALUMINIUM



BLACK



BRASS GOLD
Only available for Wave Grate.
The coloured grates below
require an extended lead time.



GUNMETAL
GREY



BRONZE

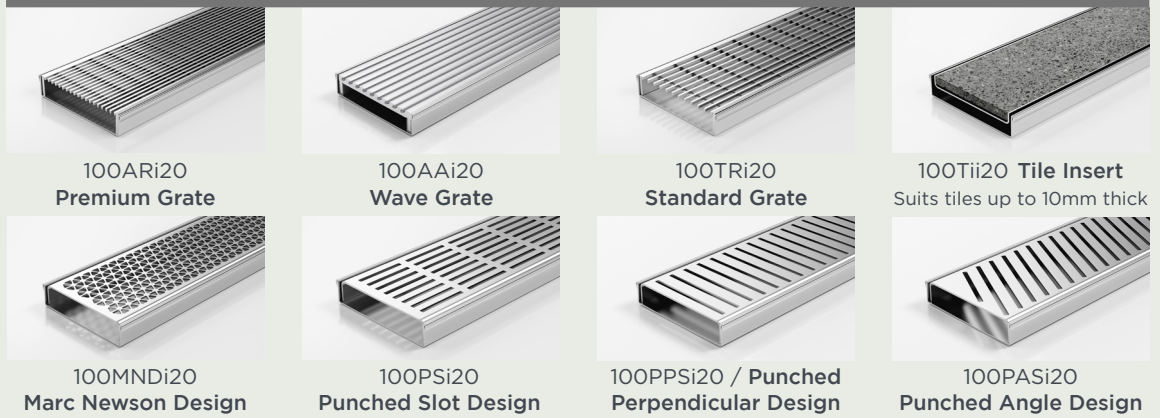


COPPER



BRASS

100 RANGE + 106mm x 23mm

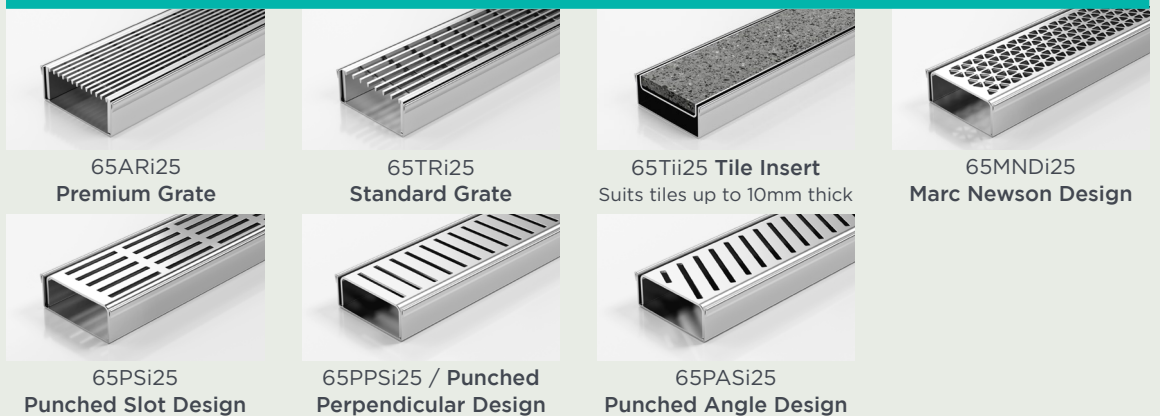


100 RANGE + 106mm x 42mm

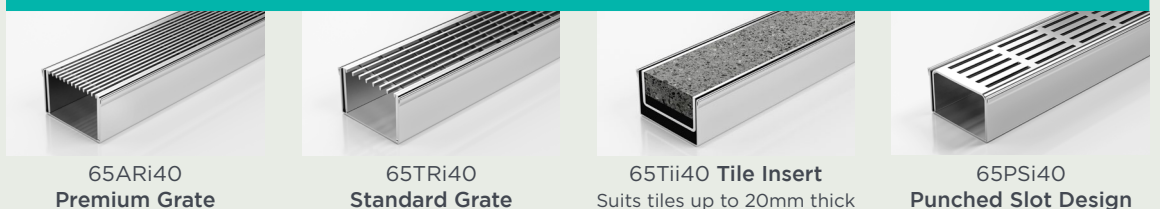


+ 100 Range supplied with DN100 Outlet Standard, other DN sizes available on request.

65 RANGE + 72mm x 27mm



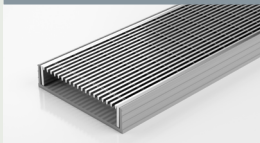
65 RANGE + 72mm x 42mm



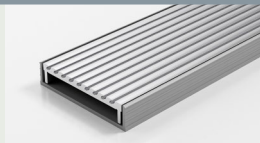
+ 65 Range supplied with DN50 Outlet Standard, other DN sizes available on request.

COMPOSITE KITS / uPVC CHANNEL

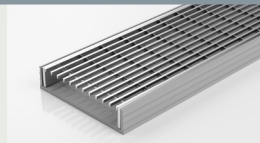
100 RANGE + 106mm x 23mm + GREY UPVC CHANNEL



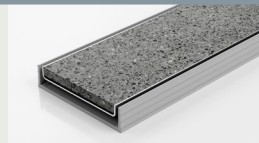
100ARG20
Premium Grate



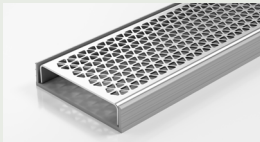
100AAG20
Wave Grate



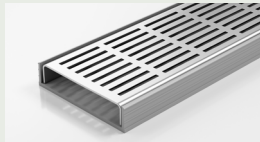
100TRG20
Standard Grate



100TiG20 Tile Insert
Suits tiles up to 10mm thick



100MNDG20
Marc Newson Design



100PSG20
Punched Slot Design

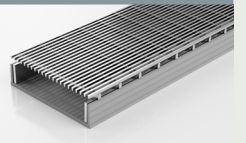


100PPSG20 / Punched
Perpendicular Design



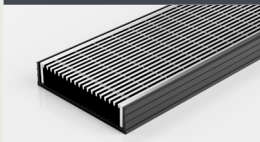
100PASG20
Punched Angle Design

106mm x 32mm

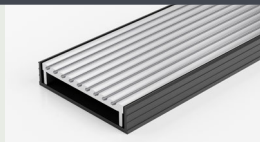


100ARG30
Premium Grate

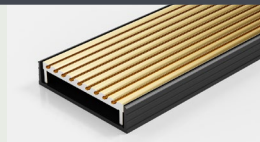
100 RANGE + 106mm x 23mm + BLACK UPVC CHANNEL



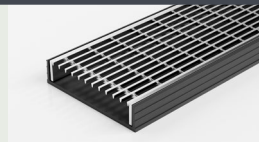
100ARGBL20
Premium Grate



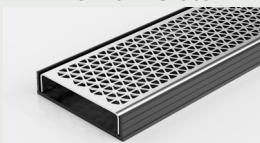
100AAGBL20
Wave Grate



100AAGBL20-BG
Wave Grate



100TRGBL20
Standard Grate



100MNDGBL20
Marc Newson Design



100PSGBL20
Punched Slot Design

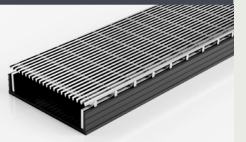


100PPSGBL20
Punched Perpendicular
Design

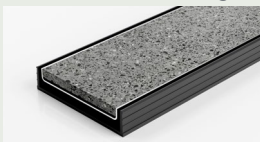


100PASGBL20
Punched Angle Design

106mm x 32mm

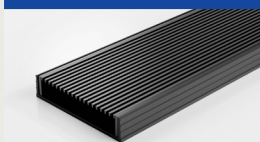


100ARGBL30
Premium Grate



100TiGBL20 Tile Insert
Suits tiles up to 10mm thick

100 RANGE + 106mm x 23mm + BLACK UPVC CHANNEL & BLACK GRATE



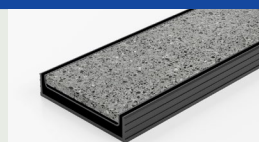
100ARGALLBL20
Premium Grate



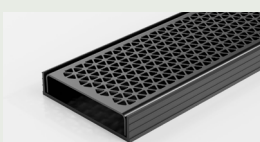
100AAGALLBL20
Wave Grate



100TRGALLBL20
Standard Grate



100TiGALLBL20 Tile Insert
Suits tiles up to 10mm thick



100MNDGALLBL20
Marc Newson Design



100PSGALLBL20
Punched Slot Design



100PPSGALLBL20
Punched Perpendicular
Design



100PASGALLBL20
Punched Angle Design

+ 100 Range supplied with DN100 Outlet Standard, other DN sizes available on request.

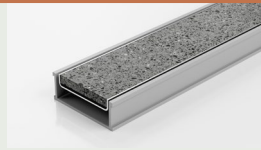
65 RANGE + 74mm x 27mm + GREY UPVC CHANNEL



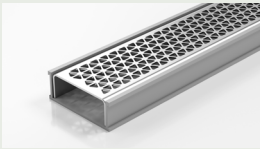
65ARG25
Premium Grate



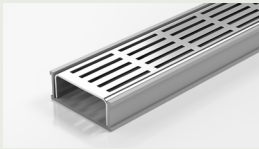
65TRG25
Standard Grate



65TiG25 **Tile Insert**
Suits tiles up to 10mm thick



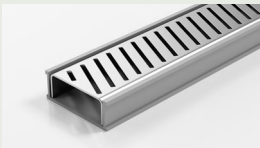
65MNDG25
Marc Newson Design



65PSG25
Punched Slot Design

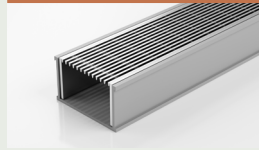


65PPSG25
Punched
Perpendicular Design

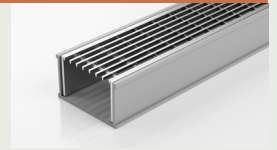


65PASG25
Punched Angle Design

65 RANGE + 74mm x 42mm + GREY UPVC CHANNEL



65ARG40
Premium Grate

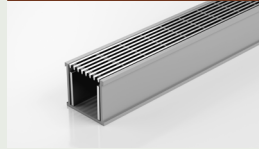


65TRG40
Standard Grate



65PSG40
Punched Slot Design

38 RANGE + 46mm x 42mm + GREY UPVC CHANNEL



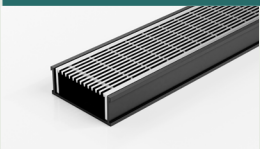
38ARG40
Premium Grate



38PSG40
Punched Slot Design

+ 38 Range supplied with DN40.

65 RANGE + 74mm x 27mm + BLACK UPVC CHANNEL



65ARGBL25
Premium Grate



65TRGBL25
Standard Grate



65ARGALLBL25
Premium Grate



65TRGALLBL25
Standard Grate



65TiGALLBL25 **Tile Insert**
Suits tiles up to 10mm thick



65TiGBL25 **Tile Insert**
Suits tiles up to 10mm thick



65MNDGBL25
Marc Newson Design



65MNDGALLBL25
Marc Newson Design



65PSGALLBL25
Punched Slot Design



65PPSGALLBL25
Punched
Perpendicular
Design



65PSGBL25
Punched Slot Design



65PPSGBL25 / Punched
Perpendicular Design



65PASGALLBL25
Punched Angle Design



65PASGBL25
Punched Angle Design

65 RANGE + 74mm x 27mm + BLACK UPVC CHANNEL & BLACK GRATE

+ 65 Range supplied with DN50 Outlet Standard, other DN sizes available on request.

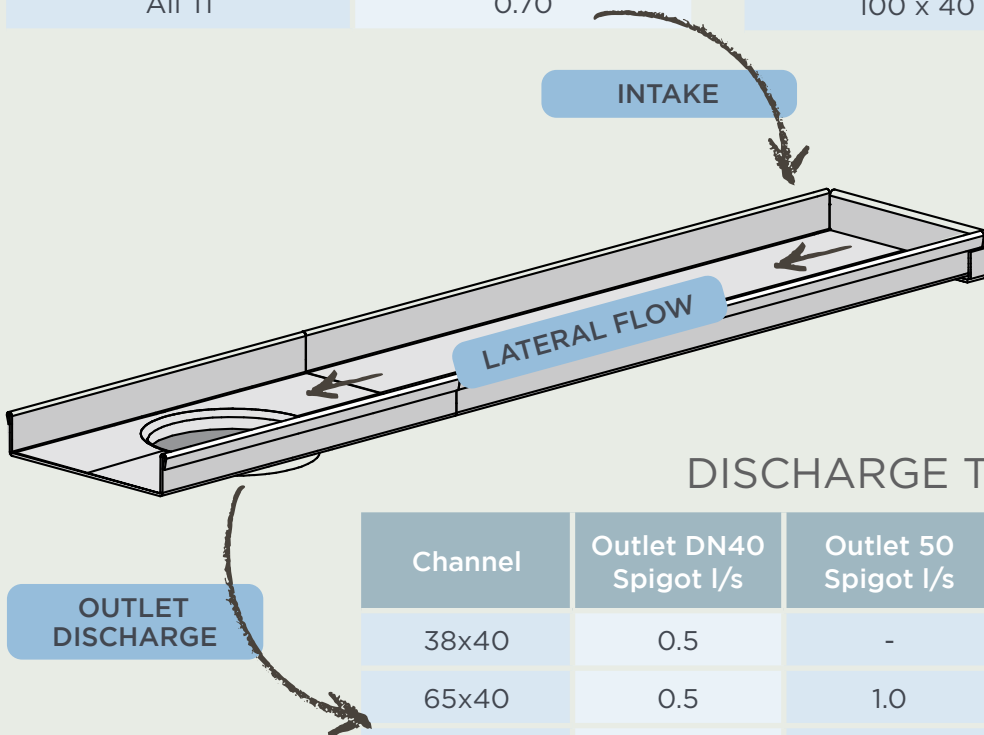
FLOW RATE GUIDE

INTAKE TABLE

38 Range	Intake (l/s/m)
AR	3.00
PS	2.50
65 / 100 Range	
AR/TR	6.00
AA, MND, PS, PPS, PAS	4.00
All Ti	0.70

LATERAL FLOW

Channel	Lateral Flow Rate
38 x 40	0.4
65 x 40	0.7
65 x 25	0.4
100 x 20	0.4
100 x 30	0.6
100 x 40	0.9



DISCHARGE TABLE

Channel	Outlet DN40 Spigot l/s	Outlet 50 Spigot l/s	Outlet DN80 Spigot l/s	Outlet DN100 Spigot l/s
38x40	0.5	-	-	-
65x40	0.5	1.0	-	-
65x25	0.5	0.5	-	-
100x20	0.5	0.5	0.5	0.5
100x30	0.5	0.8	1.0	1.0
100x40	0.5	1.0	1.0	1.0



Visit stormtech.com.au for detailed assembly and installation information.

SCAN QR CODE



DISTRIBUTORS & STOCKISTS

+ To find a distributor near you, please visit our website or call our office.

Stormtech Pty Ltd | 22 Norfolk Avenue, South Nowra, NSW 2541 Australia |
Phone 1300 653 403 | **Email** info@stormtech.com.au

TECHNICAL INFORMATION

+ We provide product information and CAD files for download from our website.