

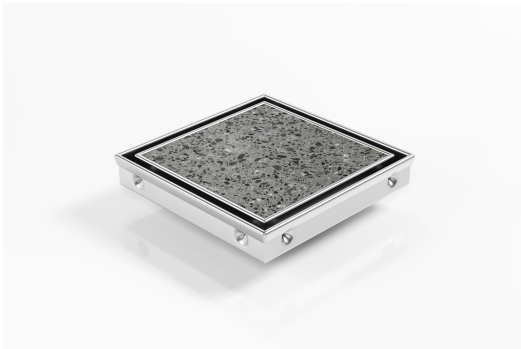


ARCHITECTURAL  
GRATES + DRAINS



# SQP100Ti20DN50

## Square Floor Waste



The SQP100Ti is a premium floor waste drain.

Manufactured from 316 marine grade stainless steel it features a premium tile insert drain and will suit a tile thickness of up to 12mm.

The SQP100Ti can be combined with the 100Ti or 65Ti linear drainage units for a unified look.

**Code** SQP100Ti20DN50

**Range** Square

**Grate Style** Ti

**Category** Square Floor Waste

**Channel Material** Stainless Steel

**Steel Grade** 316

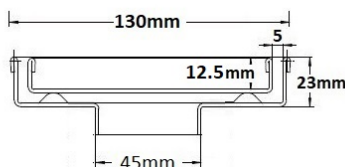
### SPECIFICATIONS + DIMENSIONS

<b>Channel Width</b>	130mm - 130mm
<b>Channel Depth</b>	23mm
<b>Length(s)</b>	As Required
<b>Outlet Size</b>	DN50

### STORMTECH COLOUR FINISHES



Electroplate finishes subject to natural variation with time and local environment. Factors such as pools/surf beaches may require electropolishing. Contact us for suitability.



Grates longer than 1500mm supplied in sections. Tile Inserts longer than 1200mm supplied in sections. Channels over 3000mm supplied in sections with joiner. +/-2mm tolerance on dimensions.

### PRODUCT APPLICATIONS

- |                            |                         |
|----------------------------|-------------------------|
| Bathroom Drainage          | Paved Area Drainage     |
| Balcony Drainage           | Shower Drainage         |
| Commercial Drainage        | Special Needs Drainage  |
| Courtyard / Patio Drainage | Threshold Drainage      |
| Driveway Drainage          | Suspended Slab Drainage |
| Pool and Spa Area Drainage | Wet Area Drainage       |

Copyright © Stormtech Pty Ltd. Patent 733361. Drawings not to scale, please use dimensions shown.  
Downloaded 25/12/2024 (please check for updates)



Visit [stormtech.com.au](http://stormtech.com.au)  
for tools + inspiration.

Phone **1300 653 403**

Email [info@stormtech.com.au](mailto:info@stormtech.com.au)